

GOOGLE FLOW VIDEO EDITING WORKFLOW

Upload a short source clip, keep the scene consistent, and prompt one clear change at a time.

WATCH full video tutorial on YouTube 🖱️ <https://youtu.be/IXyhzdPvOu4> **OPEN**

✅ **Best AI Tools I Use Daily** 🖱️ tools.johnsavageai.com **OPEN**

✅ **All My Socials** 🖱️ linktr.ee/johnsavage14 **OPEN**

CORE WORKFLOW

1

OPEN GOOGLE FLOW

Create or open a project on desktop, then use a video-capable model for the edit.

2

UPLOAD SOURCE FOOTAGE

Use a clean vertical clip. The source video recommends clips around 8 seconds and no longer than 10 seconds.

3

PROMPT ONE CHANGE

Keep the base video intact. Ask for one specific change: hair, outfit, location, animal, camera angle, or character swap.

4

MATCH THE SCENE

Add lighting, color, and environment instructions so the new subject actually belongs in the footage.

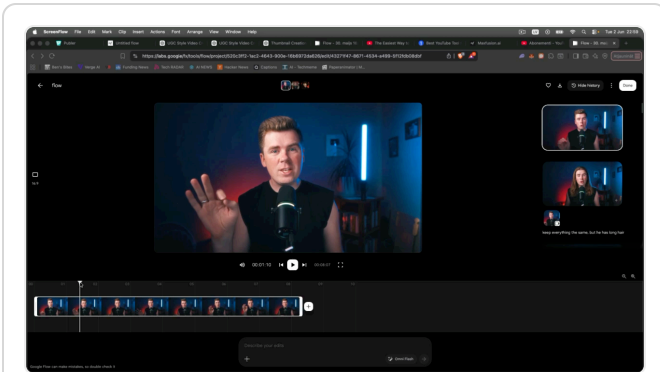
5

GENERATE VARIATIONS

Run multiple versions, keep the strongest result, then reuse it as the next source if you want a second edit layer.

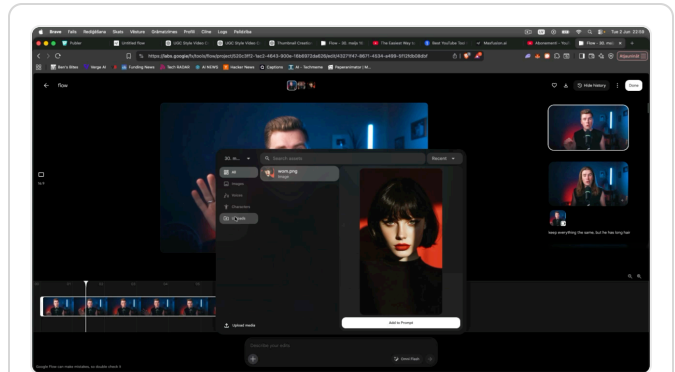
GOOGLE FLOW APP WORKFLOW

These frames come from the "gogle flow" screen-recording clip in the current Final Cut Pro timeline.



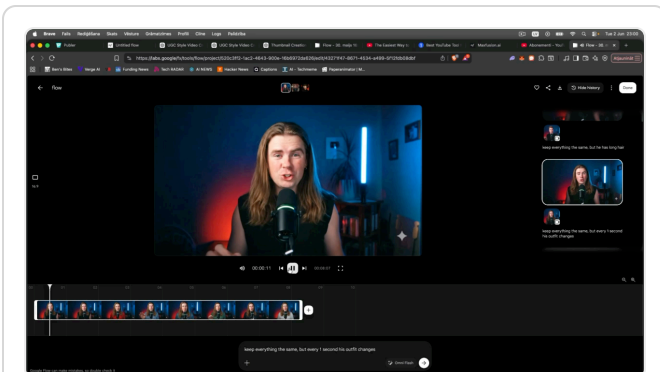
OPEN FLOW EDITOR

Source clip loaded in the Flow project with video timeline visible.



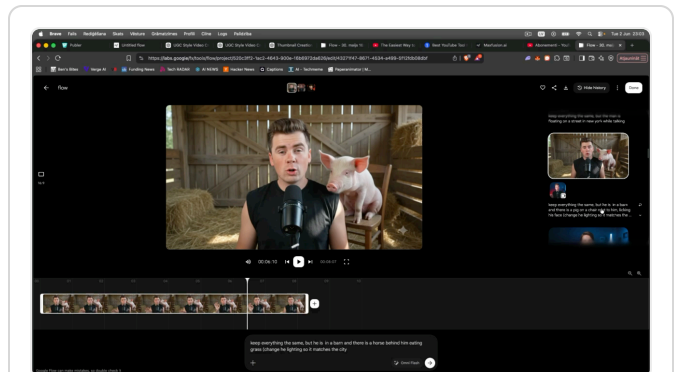
ADD MEDIA / PROMPT

Prompt box and media picker state for adding references or ingredients.



CHARACTER CHANGE RESULT

Generated variation from the prompt to keep the scene but change the person.



SCENE CHANGE RESULT

A stronger prompt changes location and adds scene-specific context.

PROMPT FORMULA

Keep everything the same, but [specific change]. Change the lighting, color, and scene details so [subject] fits [new environment].

PROMPT BLOCKS

Use these as short, direct prompts. Replace the subject, place, animal, or action as needed.

HAIR CHANGE

Keep everything the same, but he has long hair.

OUTFIT CHANGES

Keep everything the same, but every second his outfit changes.

Use this for fast fashion or transformation clips.

BEACH LOCATION

**Keep everything the same, but the location is outside at the beach.
Adjust the color and lights so the man fits the scene.**

BARN + HORSE

Keep everything the same, but he is in a barn, and there is a horse behind him eating grass. Change the lighting so it matches the barn.

PIG ON CHAIR

Keep everything the same, but he is in a barn, and there is a pig on a chair next to him, licking his face. Change the lighting so it matches the barn.

SCENE SWAPS

The video shows that detail matters. Vague prompts create fake-looking edits; scene-aware prompts look more realistic.

CHARACTER SWAP

Keep everything the same, but turn him into a woman.

Optional next pass: ask for the voice to match the new character.

HORSE RIDING

The same man talking in the same style, but he is sitting on and riding a horse outside while talking.

ZOO BACKGROUND

Make it so they are in a zoo and there are tigers chilling in the background.

DRONE ANGLE

Everything is the same, but the footage is filmed from above like a drone shot.

FIX BAD RESULTS

If it looks fake: add where the light comes from, what time of day it is, and how the subject should blend into the scene.

If the animal or object is wrong: name the animal, location, position, and action in one sentence.

If identity drifts: generate more versions and use the closest match as the next source.

If motion breaks realism: simplify the source clip or ask for a smaller change.

USE THIS EVERY TIME

A compact checklist for turning one source clip into multiple social-ready variations.

BEFORE UPLOAD

Use a short clip with clear subject framing.

Choose footage where lighting is easy to understand.

Avoid too many background people or chaotic motion.

Decide one change before prompting.

AFTER GENERATE

Check face consistency and hands first.

Check whether lighting matches the new scene.

Save the best version, not the first version.

Use the winner as source footage for the next test.

BEST USE CASES FROM THE VIDEO

Change location

Swap animals

Change outfits

Change identity

Add camera angle

Make variations

OFFICIAL PROMPTING RULE

Google recommends being specific about subject, action, environment, lighting, and style. That matches the main lesson in the Final Cut Pro source video.

Access note: Google Flow availability depends on supported regions and plan eligibility. If access fails, check the official supported-region list rather than relying on a VPN.

FINAL LINKS

Save these before you start generating.

WATCH full video tutorial on YouTube 🖱️

<https://youtu.be/IXyhzdPvOu4>

OPEN

✅ **Best AI Tools I Use Daily** 🖱️ **tools.johnsavageai.com**

OPEN

✅ **All My Socials** 🖱️ **linktr.ee/johnsavage14**

OPEN

Google Flow official tool 🖱️ **labs.google/fx/tools/flow**

OPEN

Google Flow help 🖱️ **supported regions, access, credits**

OPEN