

CLAYMATION AI WORKFLOW

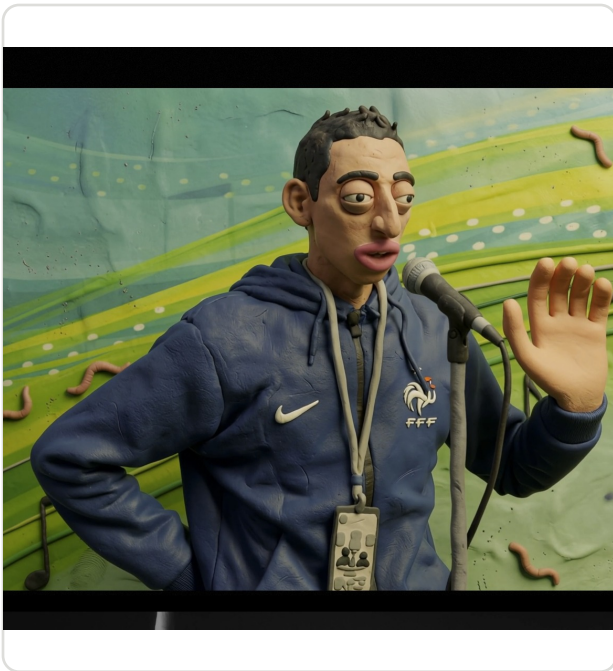
Higgsfield Nano Banana Pro + Kling 3.0 Motion Control

Best AI Tools I Use Daily

<https://tools.johnsavageai.com/>

All My Socials

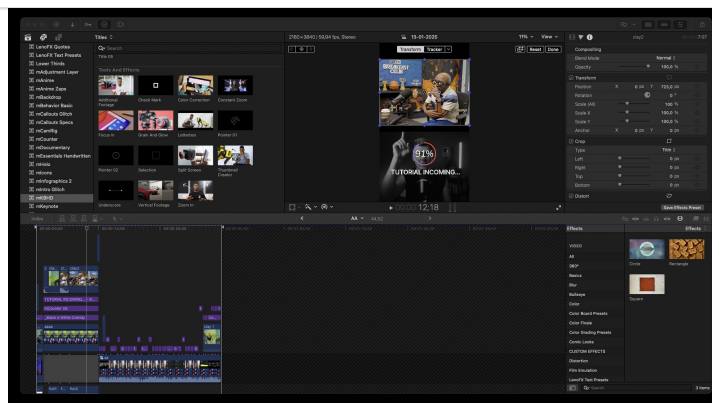
<https://linktr.ee/johnsavage14>



Final clay result shown in the open video

FAST WORKFLOW

1. Go to Higgsfield.
2. Select Image and choose Nano Banana Pro.
3. Download an image of any scene or meme.
4. Upload the image and paste the detailed prompt.
5. Press Generate and review the results.
6. Choose the best one.
7. To animate, choose Kling 3.0 Motion Control.
8. Download the specific source video.
9. Upload the video and the generated image.
10. Press Generate and use the result.



Source reviewed in Final Cut Pro timeline

Built from the open Final Cut Pro video, Captionator transcript, and Higgsfield Brave window.

MAIN IMAGE PROMPT

Use this on Higgsfield > Image with Nano Banana Pro.

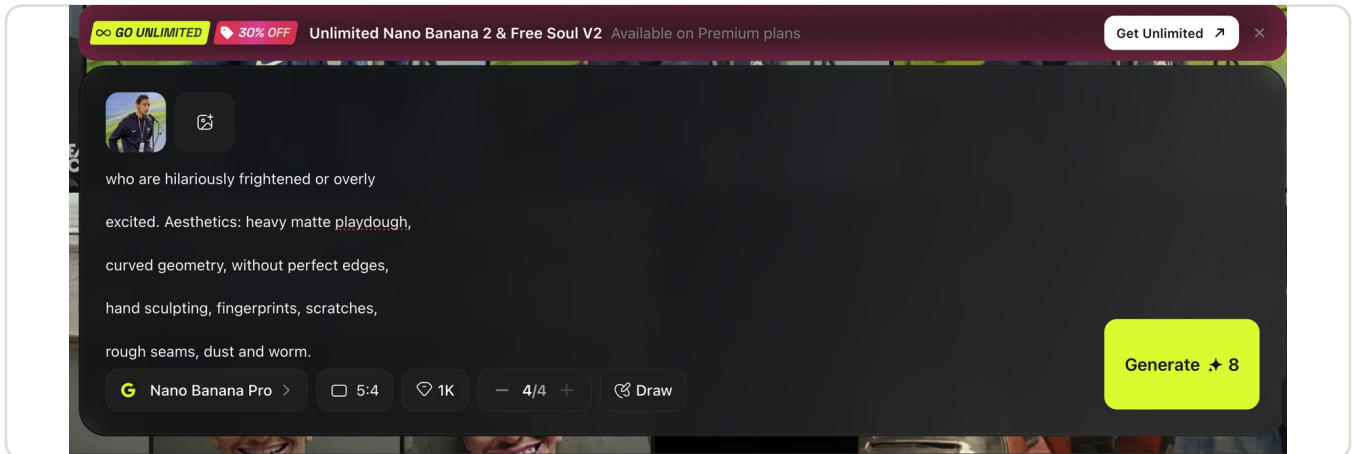
Settings visible in Brave: 5:4, 1K, 4 outputs, Generate cost 8.

Strict composition, absurd plasticine transformation. Perform a detailed 3D reimagining while accurately preserving the composition and location of reference objects. Don't move, delete or add anything. Turn the scene into a grotesque world of playdough. the style :
extreme Aardman cartoon with an absurd inclination: uneven proportions, noodle-shaped limbs, bulging eyes, large toothed smiles with pink gums; characters who are hilariously frightened or overly excited. Aesthetics: heavy matte playdough, curved geometry, without perfect edges, hand sculpting, fingerprints, scratches, rough seams, dust and worm.

HIGGSFIELD IMAGE STEPS



Claymation generations visible in Higgsfield history



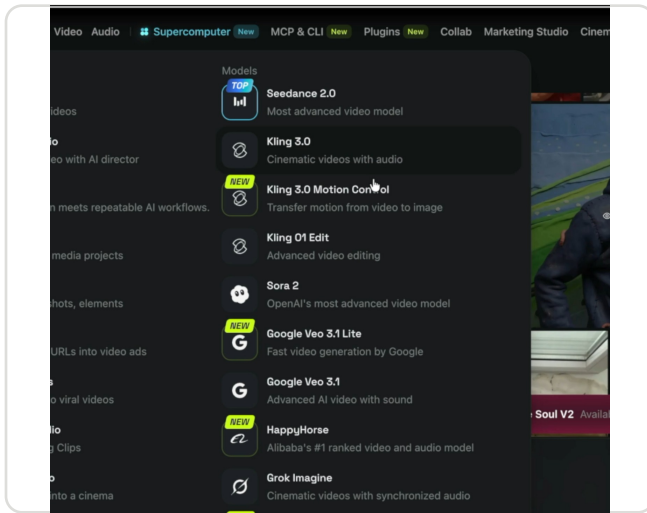
Prompt panel: Nano Banana Pro, 5:4, 1K, four outputs

DO THIS

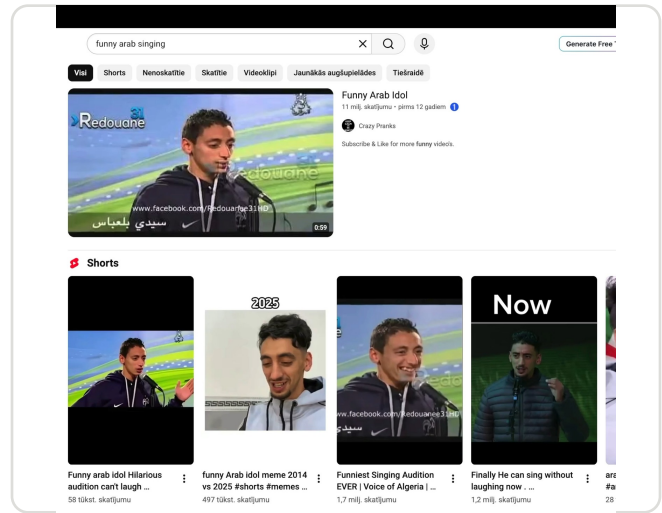
1. Open Higgsfield and switch to Image.
2. Choose Nano Banana Pro.
3. Upload the scene or meme image you want to transform.
4. Paste the full plasticine prompt from the previous page.
5. Generate four options, then pick the strongest clay result.
6. Download the selected generated image for animation.

Keep the reference composition locked: do not move, add, or delete objects.

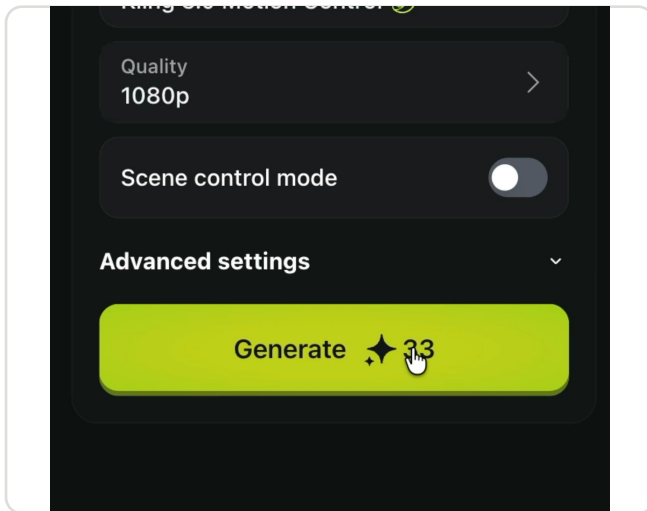
KLING 3.0 MOTION CONTROL



Choose Kling 3.0



Pick the specific source video



Generate in Motion Control
MAIN VIDEO PROMPT / MOTION INPUT



Final social CTA frame

No separate typed video prompt was visible in the source video. The shown setup is: upload the generated clay image, upload the specific source video, choose Kling 3.0 Motion Control, set Quality to 1080p, then press Generate.

KLING CHECKLIST

Generated clay image is downloaded. / Source video is ready. / Kling 3.0 is selected. / Motion Control is used. / Quality is set to 1080p. / Generate and export the animated result.

FINAL LINKS

Use these links in the final tutorial page:

Best AI Tools I Use Daily

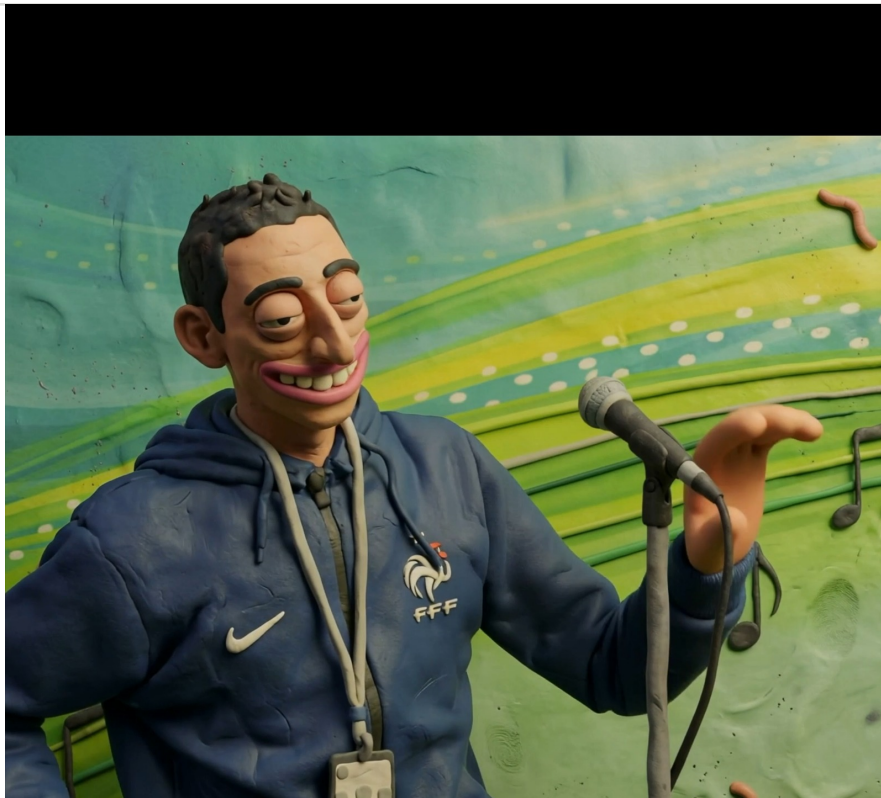
<https://tools.johnsavageai.com/>

All My Socials

<https://linktr.ee/johnsavage14>

POST CAPTION CUE

Comment "PROMPT" below



Claymation output used as the tutorial example